

## Injury attendances to Trafford General Hospital Emergency Department

### April 2010 to March 2011

This report summarises recorded injury attendances to Trafford General Emergency Department (ED) between April 2010 and March 2011.

Between April 2010 and March 2011 there were 54,758 injury attendances to Trafford General ED. Both males and females accounted for half (50%) of all attendances. The month with the highest injury attendances was September (n=5,038) with February (n=4,041) having the lowest attendances (**Figure 1**). The majority of attendances were recorded as other injury (95%). Road traffic collisions (RTC) accounted for 2% of all injury attendances, as did sports injury (**Table 1**).

For all injuries the highest proportion of attendances were for persons aged 20 to 34 (21%) and 5 to 19 years (19%) (**Figure 2**). Over four in ten (42%) of RTC attendees were aged 20 to 34 years (**Figure 3**).

**Table 2** shows the ethnicity of attendees to Trafford General ED. Over four-fifths (85%) were white.

The disposal of a patient can give an indication of the severity of the injuries sustained. Over two-fifths (42%) of attendees were discharged, nearly four in ten (38%) were referred and 14% were admitted to hospital (**Table 3**). Two-thirds (66%) of RTC attendees were discharged. Over half (54%) of sports injury attendees were discharged, while nearly half (46%) of

deliberate self harm (DSH) attendees were admitted. (**Table 4**).

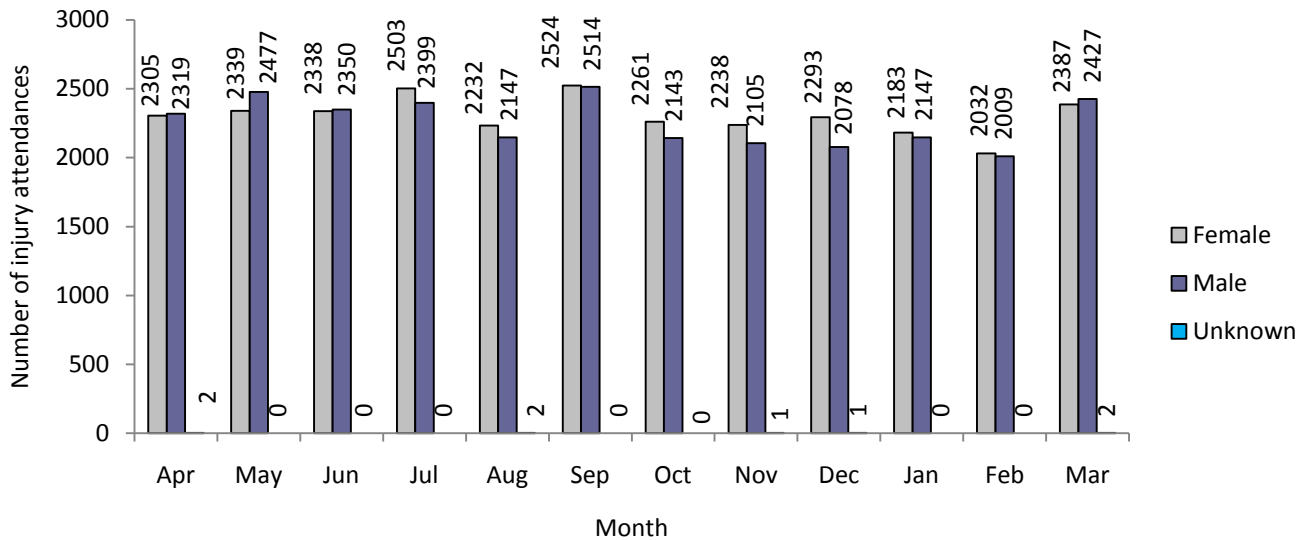
**Table 5** shows the arrival methods of attendances at Trafford General ED. Over four-fifths (80%) of attendees arrived by private transport, whilst 20% arrived by ambulance.

**Table 6** shows assault attendances to Trafford General ED. Over seven in ten (71%) of assault attendees were male, and nearly two-fifths (39%) were aged 20 to 34 years. Over a third (34%) of assault attendees arrived at the ED by ambulance, and nearly three in ten (29%) of assault attendances occurred on weekend nights.

**Figure 4 (a-d)** shows crude rates of attendance at Trafford General ED by area of residence, in this case Middle Super Output Area (MSOA). The MSOAs with the highest crude rates are indicated beneath each figure.<sup>1</sup>

<sup>1</sup> Population figures are drawn from mid-2009 population estimates from the Office for National Statistics.

**Figure 1: Trafford General ED: Total injury attendances by gender and month, April 2010 to March 2011**

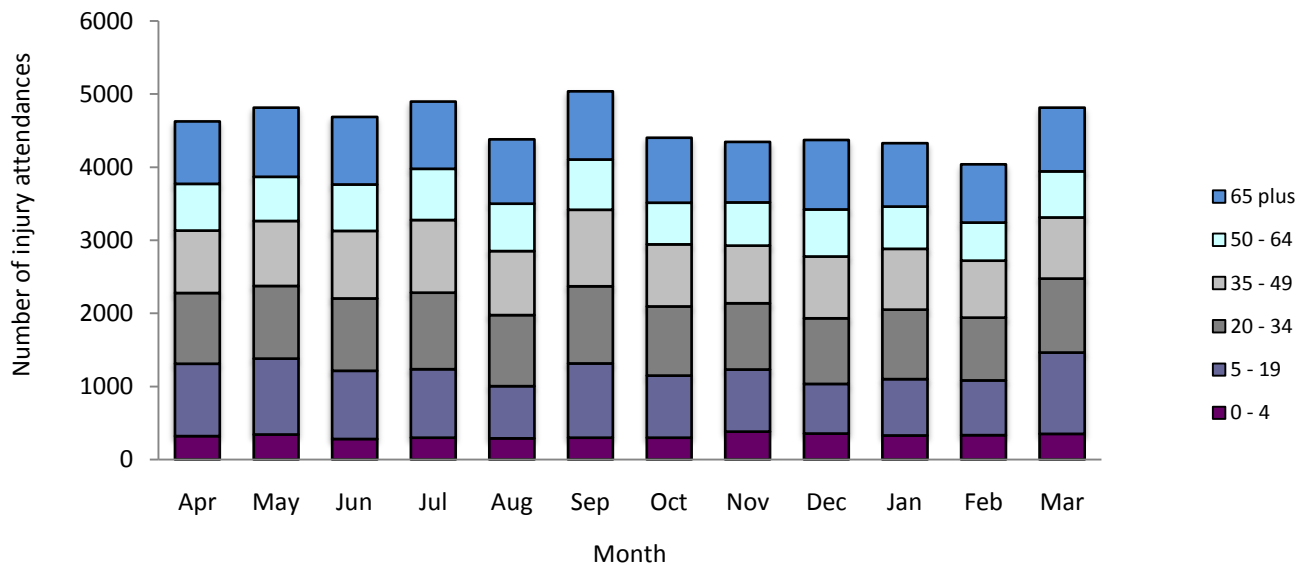


**Table 1: Trafford General ED: Total injury attendances by injury group and month, April 2010 to March 2011\***

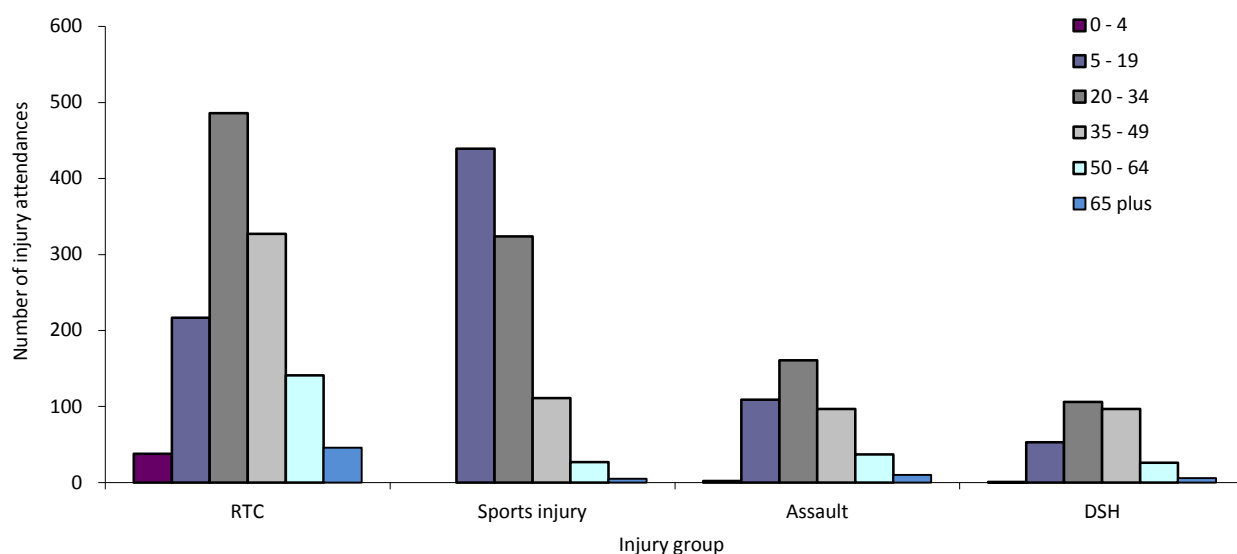
| Injury group  | Apr         | May         | Jun         | Jul         | Aug         | Sep         | Oct         | Nov         | Dec         | Jan         | Feb         | Mar         | Total        | %          |
|---------------|-------------|-------------|-------------|-------------|-------------|-------------|-------------|-------------|-------------|-------------|-------------|-------------|--------------|------------|
| Other injury  | 4438        | 4561        | 4481        | 4673        | 4162        | 4746        | 4130        | 4077        | 4166        | 4098        | 3831        | 4529        | 51892        | 95         |
| RTC           | 90          | 104         | 87          | 83          | 98          | 116         | 118         | 118         | 130         | 95          | 97          | 119         | 1255         | 2          |
| Sports injury | 63          | 69          | 87          | 87          | 72          | 109         | 93          | 87          | 28          | 60          | 52          | 99          | 906          | 2          |
| Assault       | 17          | 50          | 22          | 32          | 33          | 44          | 38          | 39          | 32          | 34          | 31          | 44          | 416          | 1          |
| DSH           | 18          | 32          | 11          | 27          | 16          | 23          | 25          | 23          | 16          | 43          | 30          | 25          | 289          | 1          |
| <b>Total</b>  | <b>4626</b> | <b>4816</b> | <b>4688</b> | <b>4902</b> | <b>4381</b> | <b>5038</b> | <b>4404</b> | <b>4344</b> | <b>4372</b> | <b>4330</b> | <b>4041</b> | <b>4816</b> | <b>54758</b> | <b>100</b> |

\*Percentages may not total 100 due to rounding.

**Figure 2: Trafford General ED: Total injury attendances by age group and month, April 2010 to March 2011**



**Figure 3: Trafford General ED: Total injury attendances by age group and injury group (excluding other injury), April 2010 to March 2011 (excluding other injury)**



**Table 2: Trafford General ED: Total injury attendances by ethnicity and month, April 2010 to March 2011<sup>23</sup>**

| Ethnicity              | Apr         | May         | Jun         | Jul         | Aug         | Sep         | Oct         | Nov         | Dec         | Jan         | Feb         | Mar         | Total        | %          |
|------------------------|-------------|-------------|-------------|-------------|-------------|-------------|-------------|-------------|-------------|-------------|-------------|-------------|--------------|------------|
| White                  | 3864        | 4035        | 3902        | 4137        | 3788        | 4254        | 3781        | 3683        | 3694        | 3647        | 3435        | 4123        | 46343        | 85         |
| Not stated             | 238         | 218         | 275         | 222         | 162         | 215         | 151         | 164         | 192         | 172         | 108         | 144         | 2261         | 4          |
| Not known              | 150         | 164         | 121         | 172         | 96          | 168         | 93          | 99          | 74          | 85          | 129         | 144         | 1495         | 3          |
| Pakistani              | 79          | 99          | 91          | 93          | 72          | 101         | 93          | 92          | 108         | 97          | 80          | 90          | 1095         | 2          |
| Any other ethnic group | 55          | 67          | 77          | 74          | 70          | 74          | 57          | 82          | 83          | 80          | 86          | 70          | 875          | 2          |
| Black                  | 81          | 72          | 62          | 72          | 56          | 66          | 71          | 76          | 68          | 77          | 59          | 89          | 849          | 2          |
| Indian                 | 66          | 79          | 60          | 57          | 53          | 66          | 69          | 61          | 68          | 78          | 54          | 66          | 777          | 1          |
| Mixed                  | 52          | 43          | 55          | 38          | 52          | 47          | 51          | 51          | 42          | 56          | 53          | 53          | 593          | 1          |
| Asian other            | 28          | 22          | 31          | 17          | 16          | 26          | 21          | 23          | 26          | 19          | 21          | 15          | 265          | 0          |
| Chinese                | ***         | ***         | 9           | 14          | 10          | 21          | 10          | 7           | ***         | ***         | 9           | ***         | 151          | 0          |
| Bangladeshi            | ***         | ***         | 5           | 6           | 6           | 0           | 7           | 6           | ***         | ***         | 7           | ***         | 54           | 0          |
| <b>Total</b>           | <b>4626</b> | <b>4816</b> | <b>4688</b> | <b>4902</b> | <b>4381</b> | <b>5038</b> | <b>4404</b> | <b>4344</b> | <b>4372</b> | <b>4330</b> | <b>4041</b> | <b>4816</b> | <b>54758</b> | <b>100</b> |

**Table 3: Trafford General ED: Total injury attendances by method of disposal and month, April 2010 to March 2011<sup>4\*</sup>**

| Disposal           | Apr         | May         | Jun         | Jul         | Aug         | Sep         | Oct         | Nov         | Dec         | Jan         | Feb         | Mar         | Total        | %          |
|--------------------|-------------|-------------|-------------|-------------|-------------|-------------|-------------|-------------|-------------|-------------|-------------|-------------|--------------|------------|
| Discharged         | 1910        | 2047        | 1896        | 2055        | 1813        | 2326        | 1999        | 1705        | 1824        | 1702        | 1720        | 1999        | 22996        | 42         |
| Referral/follow-up | 1732        | 1810        | 1927        | 1961        | 1675        | 1657        | 1607        | 1672        | 1521        | 1720        | 1534        | 1812        | 20628        | 38         |
| Admitted           | 667         | 676         | 611         | 623         | 581         | 594         | 575         | 655         | 689         | 642         | 534         | 599         | 7446         | 14         |
| Other              | 317         | 283         | 254         | 263         | 312         | 461         | 223         | 312         | 338         | 266         | 253         | 406         | 3688         | 7          |
| <b>Total</b>       | <b>4626</b> | <b>4816</b> | <b>4688</b> | <b>4902</b> | <b>4381</b> | <b>5038</b> | <b>4404</b> | <b>4344</b> | <b>4372</b> | <b>4330</b> | <b>4041</b> | <b>4816</b> | <b>54758</b> | <b>100</b> |

\*Percentages may not total 100 due to rounding.

<sup>2</sup> Please note that all numbers less than five have been suppressed in line with patient confidentiality and if there is only one number <5 in a category then two numbers will be suppressed at the next level.

<sup>3</sup> White=Irish, British, other white background; Mixed = white and black, white and Asian, mixed any other; Other=any other ethnic group, any other Asian background; Black=African, Caribbean, other black.

<sup>4</sup> Admitted=admitted to hospital/became a lodged patient of the same health care provider; Discharged=discharged - did not require any follow up treatment; Referral/follow-up=discharged - follow up treatment to be provided by GP, referred to ED clinic, referred to fracture clinic, referred to other out-patient clinic, referred to other health care professional; Other=died in department, left department before being treated, left department having refused treatment, other.

**Table 4: Trafford General ED: Total injury attendances by method of disposal and injury group, April 2010 to March 2011\***

| Disposal            | Assault    |            | DSH        |            | Other injury |            | RTC         |            | Sports injury |            | Total        |            |
|---------------------|------------|------------|------------|------------|--------------|------------|-------------|------------|---------------|------------|--------------|------------|
|                     | n          | %          | n          | %          | n            | %          | n           | %          | n             | %          | n            | %          |
| Discharged          | 174        | 42         | 29         | 10         | 21470        | 41         | 830         | 66         | 493           | 54         | 22996        | 42         |
| Referral/ follow-up | 164        | 39         | 134        | 46         | 19654        | 38         | 331         | 26         | 345           | 38         | 20628        | 38         |
| Admitted            | 31         | 7          | 81         | 28         | 7307         | 14         | 20          | 2          | 7             | 1          | 7446         | 14         |
| Other               | 47         | 11         | 45         | 16         | 3461         | 7          | 74          | 6          | 61            | 7          | 3688         | 7          |
| <b>Total</b>        | <b>416</b> | <b>100</b> | <b>289</b> | <b>100</b> | <b>51892</b> | <b>100</b> | <b>1255</b> | <b>100</b> | <b>906</b>    | <b>100</b> | <b>54758</b> | <b>100</b> |

\*Percentages may not total 100 due to rounding

**Table 5: Trafford General ED: Total injury attendances by mode of arrival and month, April 2010 to March 2011**

| Mode         | Apr         | May         | Jun         | Jul         | Aug         | Sep         | Oct         | Nov         | Dec         | Jan         | Feb         | Mar         | Total        | %          |
|--------------|-------------|-------------|-------------|-------------|-------------|-------------|-------------|-------------|-------------|-------------|-------------|-------------|--------------|------------|
| Other        | 3945        | 4014        | 4003        | 4151        | 3641        | 4300        | 3678        | 3628        | 3580        | 3612        | 3332        | 4095        | 45979        | 84         |
| Ambulance    | 681         | 802         | 685         | 751         | 740         | 738         | 726         | 716         | 792         | 718         | 709         | 721         | 8779         | 16         |
| <b>Total</b> | <b>4626</b> | <b>4816</b> | <b>4688</b> | <b>4902</b> | <b>4381</b> | <b>5038</b> | <b>4404</b> | <b>4344</b> | <b>4372</b> | <b>4330</b> | <b>4041</b> | <b>4816</b> | <b>54758</b> | <b>100</b> |

**Table 6: Trafford General Hospital ED: Assault attendances by gender, mode of arrival, age group and day/time of attendance, April 2010 to March 2011**

| Injury type     | Assault attendees |    | All injuries % (n=54,758) |
|-----------------|-------------------|----|---------------------------|
| Gender          | n                 | %  | %                         |
| Female          | 119               | 29 | 46                        |
| Male            | 297               | 71 | 54                        |
| Mode of arrival | n                 | %  | %                         |
| Ambulance       | 141               | 34 | 16                        |
| Other           | 275               | 66 | 84                        |
| Age group       | n                 | %  | %                         |
| 0 - 4           | ***               | 1  | 13                        |
| 5 - 19          | 109               | 26 | 26                        |
| 20 - 34         | 161               | 39 | 21                        |
| 35 - 49         | 97                | 23 | 16                        |
| 50 - 64         | 37                | 9  | 10                        |
| 65 plus         | ***               | 2  | 12                        |
| Day & time      | n                 | %  | %                         |
| Weekend nights* | 119               | 29 | 11                        |
| Weekend days    | 19                | 22 | 20                        |
| Weekdays        | 207               | 50 | 69                        |

\*8pm to 4am, Friday night/Saturday morning; Saturday night/Sunday morning; Sunday night/Monday morning

Author: Ian Warren

Published: June 2011

For further information please contact: Centre for Public Health, Research Directorate, Liverpool John Moores University, 2<sup>nd</sup> Floor, Henry Cotton Building, 15-21 Webster Street, Liverpool, L3 2ET.

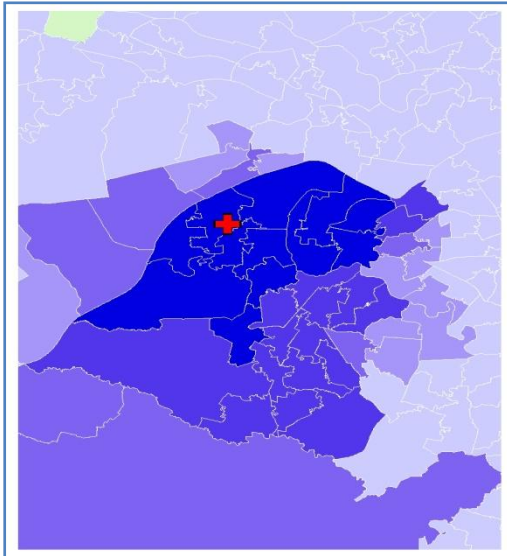
Tel: 0151 231 4513 or Email: [i.j.warren@ljmu.ac.uk](mailto:i.j.warren@ljmu.ac.uk)

Website: [www.tiig.info](http://www.tiig.info) (data requests should be made through the website)

**Figure 4a,b,c,d: Middle Super Output Area of residence for injury attendances to Trafford General ED. Quintiles of crude rates per 1,000 population, April 2010 to March 2011**

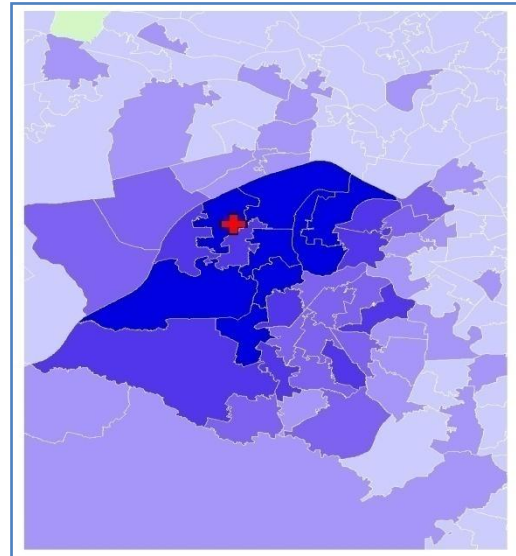
a) All injury attendances: quintiles of crude rates per 1,000 population    b) RTC: quintiles of crude rates per 1,000 population

**+** Trafford General ED



|  |                     |                         |
|--|---------------------|-------------------------|
|  | 1 (0.00 – 8.17)     |                         |
|  | 2 (8.18 – 26.06)    | MSOA E02001275 (473.90) |
|  | 3 (26.07 – 54.66)   | MSOA E02001267 (391.94) |
|  | 4 (54.67 – 226.41)  | MSOA E02001266 (373.51) |
|  | 5 (226.42 – 473.90) | MSOA E02001260 (363.65) |

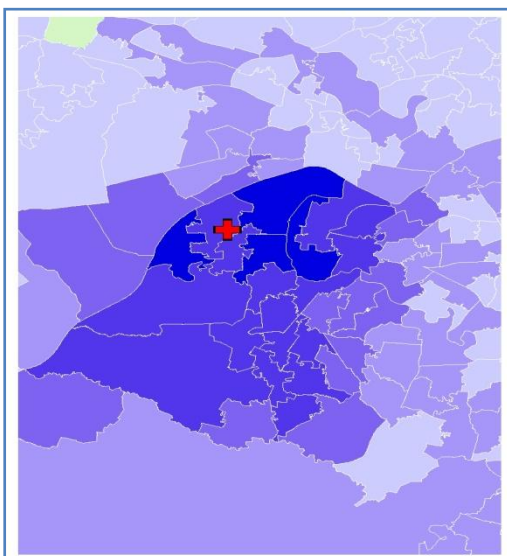
**+** Trafford General ED



|  |                  |                        |
|--|------------------|------------------------|
|  | 1 (0.00 – 0.29)  |                        |
|  | 2 (0.30 – 1.30)  | MSOA E02001275 (10.78) |
|  | 3 (1.31 – 3.13)  | MSOA E02001260 (9.17)  |
|  | 4 (3.14 – 5.52)  | MSOA E02001277 (8.85)  |
|  | 5 (5.53 – 10.78) | MSOA E02001266 (7.27)  |

c) Sports injury: quintiles of crude rates per 1,000 population

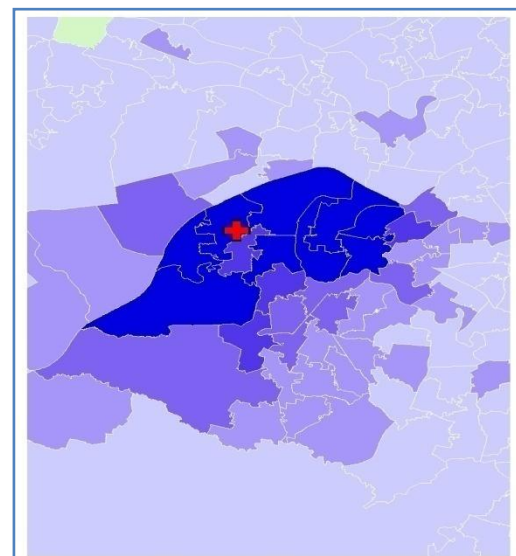
**+** Trafford General ED



|  |                 |                       |
|--|-----------------|-----------------------|
|  | 1 (0.00 – 0.09) |                       |
|  | 2 (0.10 – 0.64) | MSOA E02001260 (7.18) |
|  | 3 (0.65 – 2.51) | MSOA E02001265 (5.57) |
|  | 4 (2.52 – 4.42) | MSOA E02001267 (5.22) |
|  | 5 (4.43 – 7.18) | MSOA E02001266 (4.85) |

d) Assault: quintiles of crude rates per 1,000 population

**+** Trafford General ED



|  |                 |                       |
|--|-----------------|-----------------------|
|  | 1 (0.00 – 0.09) |                       |
|  | 2 (0.10 – 0.42) | MSOA E02001266 (4.36) |
|  | 3 (0.43 – 1.06) | MSOA E02001267 (3.77) |
|  | 4 (1.07 – 2.22) | MSOA E02001260 (3.59) |
|  | 5 (2.23 – 4.36) | MSOA E02001269 (3.27) |